

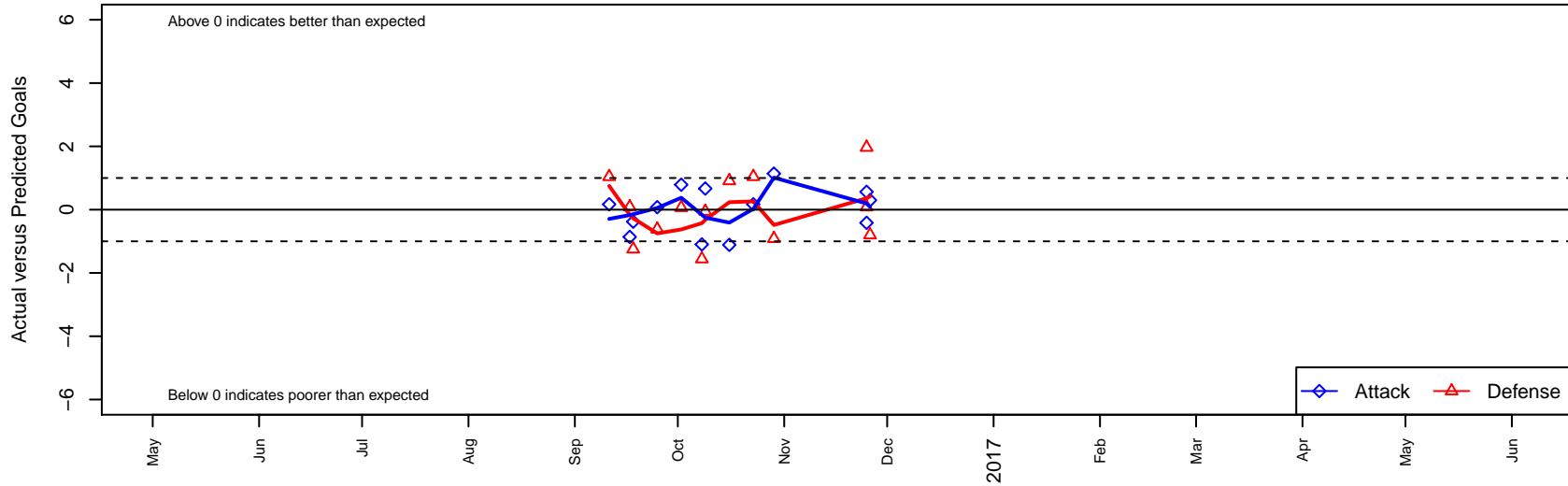
# Pateadores Huntington Beach B01

San Diego, CAS  
 B01 total strength=1671  
 attack=22.88 defense=18.3  
 fall league = SCDL FI1 U16  
 notes= Zilpa 2016

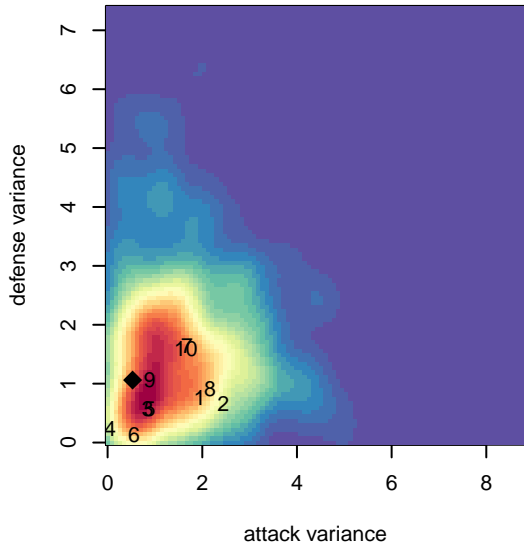
alt names used:  
 Pateadores HB01 Zilpa  
 Pateadores – HB B2001

Venues played:  
 2016 SCDL FI1 U16  
 2016 Nomads Thanksgiving 1st Division U16

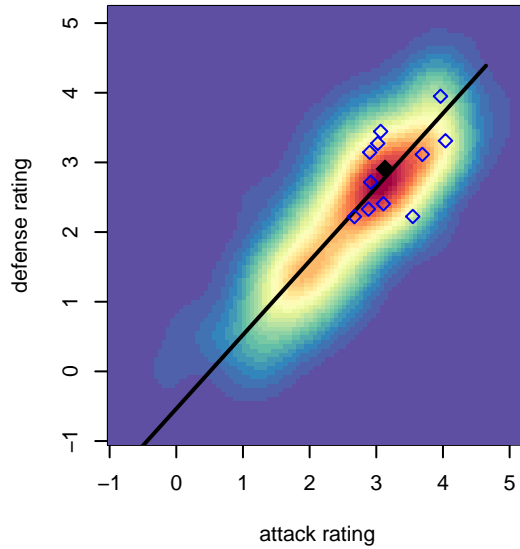
**Pateadores Huntington Beach B01**  
 Dots are actual minus expected GF (blue circles) and GA (red triangles).  
 Blue line is smoothed change in attack strength. Red is smoothed change in defense strength.



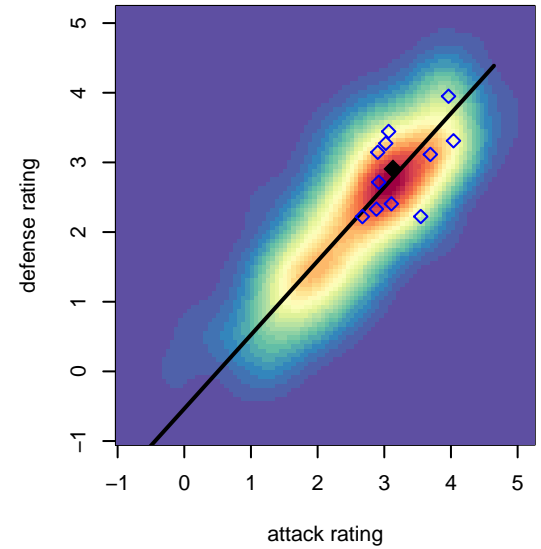
**attack and defense variance (black dot)  
relative to other teams  
and top 10 in region**



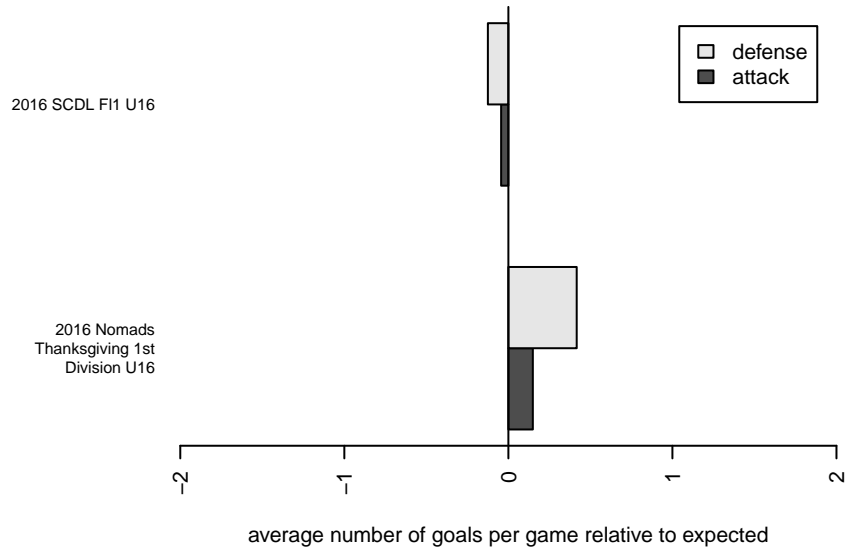
**attack and defense rating  
relative to others at age  
and all opponents in last 13 months**



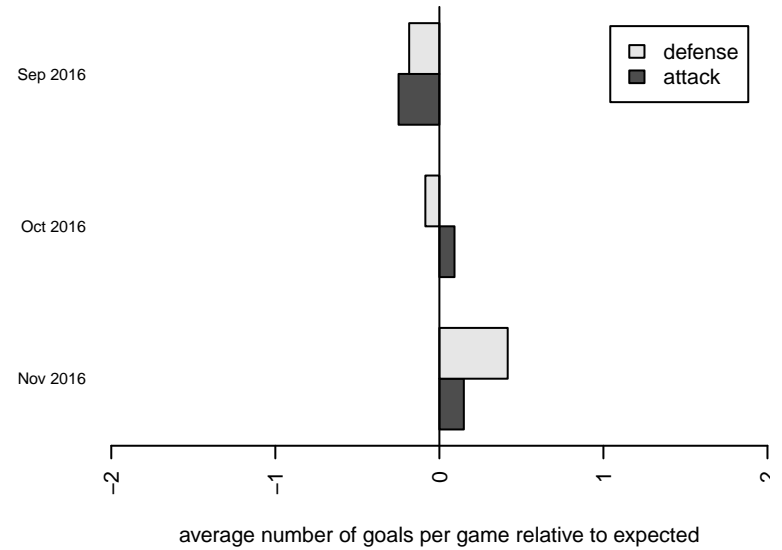
**attack and defense rating  
relative to others at age  
and all opponents in last 13 months**



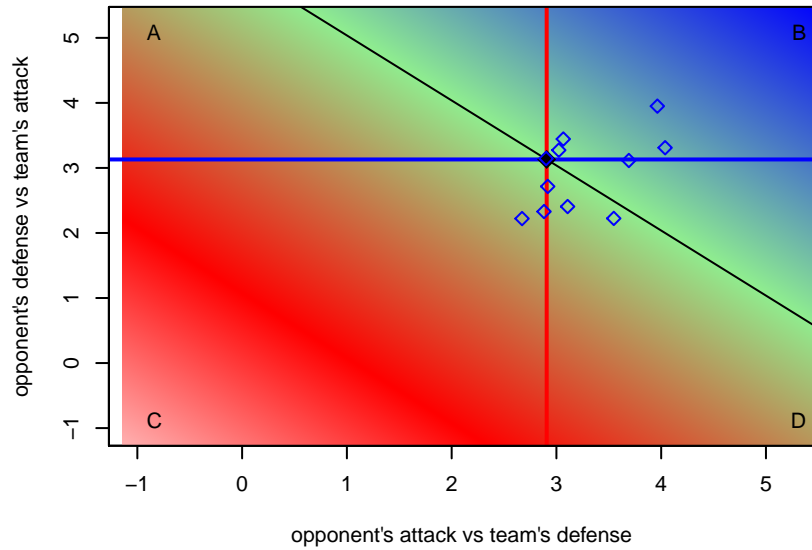
**Performance relative to 13 month average**



**Performance relative to 13 month average**



Distribution of opponents  
 Red = Lose zone, Blue = Win zone, Green = Even  
 Black line separates win/lose zones



lot. A=Neither has attack advantage, B=Opponent has both attack and defense advantage, C=Opponent has both attack and defense disadvantage, D=Both have

<b>te</b>	<b>home</b>		<b>away</b>		<b>venue</b>	<b>pred.home</b>	<b>pred.a</b>
11-26	Fullerton Rangers White B01	2	Pateadores Huntington Beach B01	1	2016 Nomads Thanksgiving 1st Division U1	1.20	0.70
11-25	Pateadores Huntington Beach B01	1	Union Sacramento FC B01	1	2016 Nomads Thanksgiving 1st Division U1	0.44	2.97
11-25	Pateadores Huntington Beach B01	1	TFA FC Los Angeles Blue B01	1	2016 Nomads Thanksgiving 1st Division U1	1.42	1.08
10-29	Real So Cal White B01	2	Pateadores Huntington Beach B01	2	2016 SCDL FI1 U16	1.08	0.86
10-23	Legends FC B01	2	Pateadores Huntington Beach B01	1	2016 SCDL FI1 U16	3.04	0.83
10-16	Pateadores Huntington Beach B01	1	Strikers FC South Coast B01	0	2016 SCDL FI1 U16	2.11	0.97
10-09	Los Angeles United FA Academy Reserve B01	2	Pateadores Huntington Beach B01	3	2016 SCDL FI1 U16	1.94	2.33
10-08	LA Galaxy South Bay Elite B01	4	Pateadores Huntington Beach B01	0	2016 SCDL FI1 U16	2.44	1.10
10-02	Pateadores Huntington Beach B01	2	Real So Cal ADT B01	1	2016 SCDL FI1 U16	1.21	1.06
09-25	Pateadores Huntington Beach B01	2	Strikers FC North B01	2	2016 SCDL FI1 U16	1.92	1.38
09-18	Pacific Coast SC Blue B01	2	Pateadores Huntington Beach B01	2	2016 SCDL FI1 U16	0.75	2.38
09-17	Pateadores Huntington Beach B01	0	Real So Cal White B01	1	2016 SCDL FI1 U16	0.86	1.08
09-11	Pateadores Huntington Beach B01	1	Legends FC B01	2	2016 SCDL FI1 U16	0.83	3.04